

DOYEN PUBLISHERS

KENYA JUNIOR SCHOOL EDUCATION ASSESSMENT



TERM 1 2025 MID-TERM EXAM GRADE 9 – SOCIAL STUDIES - 907

Time: 1 hour 30 mins

NAME: _____

SCHOOL: _____

STREAM: _____ DATE: _____

INSTRUCTIONS

- Write your name, school, stream and date in the spaces provided above.
- Answer **ALL** questions in this booklet.
- All answers must be given as per the guidelines of the questions.
- This question paper consists of **TWO** sections: **A** and **B**.
- Answer **ALL** the questions in section A in the table below.
- Answer **ALL** the questions in section B in the spaces provided after each question.
- Show all the workings in section B in the spaces provided.
- Do **NOT** remove any page from this question paper.
- Answer the questions in English.

ANSWER SHEET - SECTION A

1.	2.	3.	4.	5.	6.	7.	8.	9.	10.	11.	12.	13.	14.	15.	16.	17.	18.	19.	20

LEARNER'S SCORE

SCORES		TOTAL
A (Out of 20)		
B (Out of 80)		

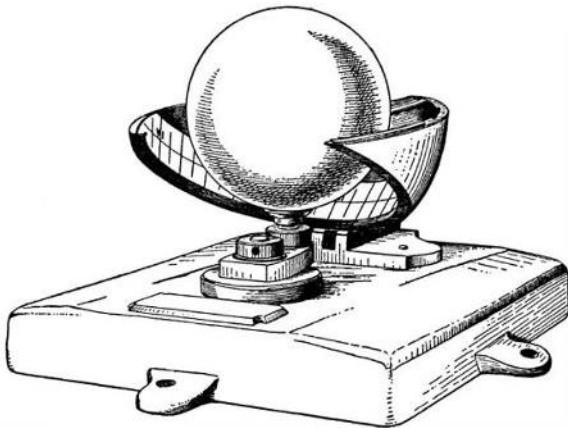
This paper consists of 8 printed pages. Candidates should check the question paper to confirm that all pages are printed as indicated and that no questions are missing.

SECTION A (20 marks)

Answer **ALL** the questions in this section.

1. A _____ is the learning route someone chooses as they get ready to focus on a specific area of interest.
A. career C. career path
B. path D. pathway
2. Learners listed the following as pre-career support systems. Which one is incorrect?
A. Chaplaincy support system
B. Beer support system
C. Academic support system
D. Parental support system
3. The following are the first four milestones in implementing a Community Service-Learning Project.
i. *Designing a solution*
ii. *Implementation*
iii. *Planning for the project*
iv. *Problem identification*
Arrange them in the correct order.
A. iv, i, ii, iii C. iv, iii, ii, i
B. iv, ii, i, iii D. iv, i, iii, ii
4. Why is it important to document your work when carrying out a CSL project?
A. Allows you to monitor milestones and deadlines.
B. Helps in repeating mistakes and saves time.
C. Increases confusion and miscommunication.
D. Heightens the chance of loss of important knowledge.
5. The weather instrument shown is known as:
A. anemometer C. windsock
B. sunshine recorder D. barometer
6. Which element of weather is measured by the instrument?
A. rain C. sunshine
B. wind D. humidity
7. _____ deals with the study of earth as a home for man.
A. Geography C. History
B. Citizenship D. Life skills
8. At Dar-es-Salaam 40°E, the time is 3.00am. What is the time at Ecuador 47°E.
A. 1.00am C. 1.15am
B. 6.00am D. 4.45am
9. During a discussion on planets of the solar system, learners gave the following as the characteristics of planets. All of the are true **except** one. Which one is it?
A. They are spherical in shape
B. They don't have their own light but reflect it from the sun.
C. All planets support life.
D. They have their own force of gravity
10. The political organization of the Zulu was hierarchical where the basic political unit was the household. These households were known as ____
A. Imizi C. Inkosi
B. Isigodi D. Isifunda
11. Ernisa mentioned in class that the following countries were colonized by the French.
i. *Morocco*
ii. *Senegal*
iii. *Tunisia*
iv. *Madagascar*
Which among the four countries was not colonized by the French?
A. i
B. ii
C. iii
D. iv

The following image was taken by learners during a field trip to a weather station. Study it and answer questions 5 and 6.



12. When did the Berlin conference on the partitioning of Africa take place?

- A. Between 1894 and 1895
- B. Between 1884 and 1885
- C. Between 1984 and 1985
- D. Between 1994 and 1995

13. Which among the following is a desirable personality attribute?

- A. Close-mindedness
- B. Apathy
- C. Over-sensitivity
- D. Responsibility

14. Name the type of settlement pattern shown below.



- A. Clustered settlement pattern
- B. Nucleated settlement pattern
- C. Linear settlement pattern
- D. Radial settlement pattern

15. Why is it important to conduct a pre-visit before the actual field study?

- A. enables you to get time to bribe officials.
- B. helps one to identify the appropriate methods of data presentation.
- C. helps to determine appropriate routes to be taken.
- D. Provides us with entertainment.

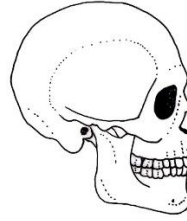
16. _____ is a natural process of gradual and continuous change of living organisms from a simpler state to a better-adapted and superior one.

- A. Natural selection
- B. Mutation
- C. Adaptation
- D. Evolution

17. Which of the following historical sites and monuments is found in Egypt?

- A. Pyramids of Giza
- B. Timbuktu
- C. Robben Island
- D. Vasco Da Gama Pillar

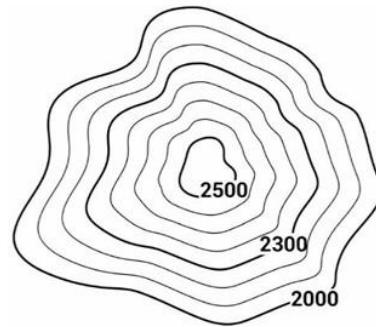
18. Learners saw the fossil below during a visit to the museum.



The fossil is most likely to be that of a _____

- A. Cow
- B. Chimpanzee
- C. Homo erectus
- D. Gorilla

19. Contour interval is the difference in height between any two successive contours. Study the diagram below and determine the contour interval.



- A. 100
- B. 200
- C. 2000
- D. 2300

20. Learners mentioned the following characteristics of certain climate.

- i) *Extremely hot temperatures during the day and cold temperatures at night.*
- ii) *Low annual rainfall of less than 250 mm.*
- iii) *Very low humidity levels.*
- iv) *Can experience temperature extremes; some deserts have minimal seasonal variation.*
- iv) *Minimal vegetative cover consisting mostly of hardy plants like cacti and xerophytes.*

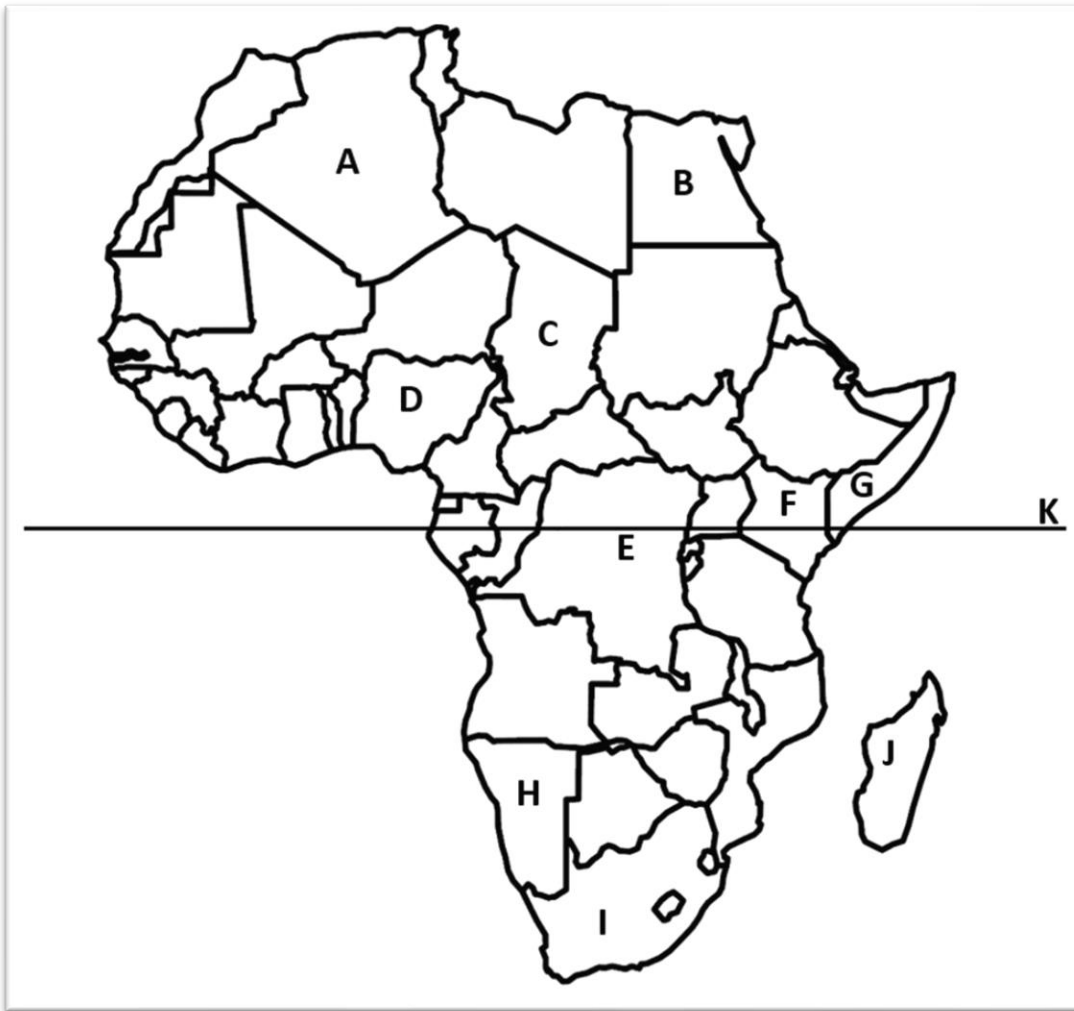
The climate described above is most likely to be _____

- A. Mountain climate
- B. Desert climate
- C. Semi-desert climate
- D. Semi-arid climate

SECTION B (80 marks)

Answer ALL questions in this section.

21. Study the map of Africa drawn below and use it to answer the questions that follow.



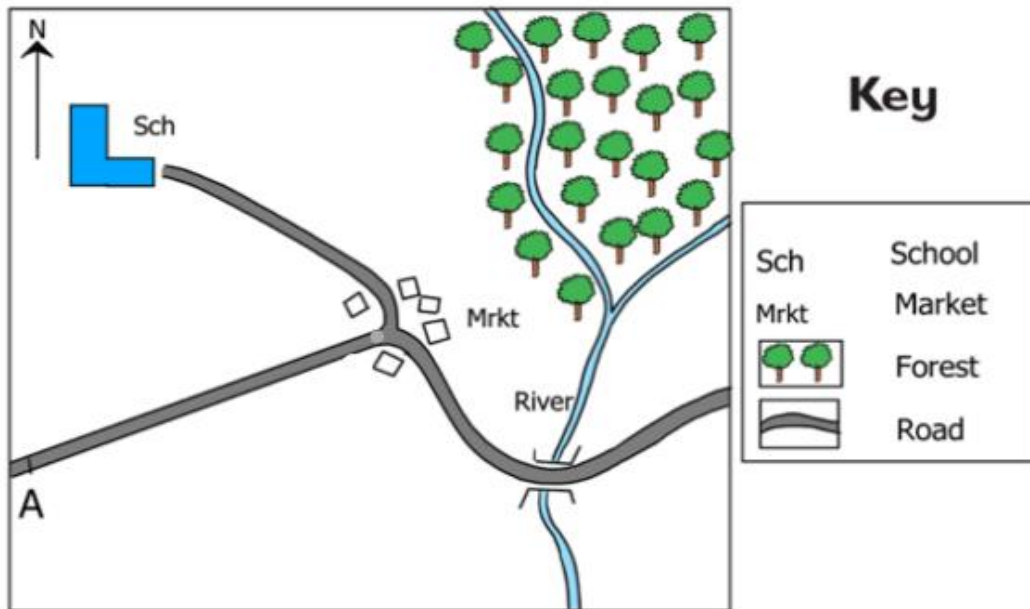
- a) Name the countries marked: (3 marks)
A – _____
E – _____
G – _____
- b) A landlocked country does not border an ocean or a sea. From the map shown above, an example of a landlocked country is the country marked _____. (2 marks)
- c) From the map, the country with the longest coastline is marked _____. (1 mark)
- d) Name **one** precious mineral that is mined in the country marked I. (1 mark)

- e) Who is the current deputy president of the country marked F? (1 mark)

- f) Name the latitude marked K. (1 mark)

g) Apart from Kenya, name any other **two** countries crossed by latitude K. (2 marks)

22. Below is a map extract. Study it and answer the questions that follow.



a) Using the scale 1cm represents 2km, measure the distance from point A to the school. (4 marks)

b) Name one economic activity carried out in the area. Give a reason for your answer. (2 marks)

c) The highest area on the map is the _____ part while the lowest area on the map is the _____ part. (2 marks)

d) What is the direction of the market from the forest? (2 marks)

23. Distinguish between weather and climate while giving **two** examples for each. (6 marks)

24. During a group discussion, learners searched on their Chromebooks and found out that self-improvement is the ongoing process of enhancing one’s abilities, skills and qualities to achieve personal growth and development.

a) Explain the following traits for self-improvement. (6 marks)

i) Confidence

ii) Perseverance

iii) Self-discipline

b) State **three** ways of achieving educational goals for self-improvement in social life. (3 marks)

c) Explain why it is important to understand our emotions and that of others. (2 marks)

25. Learners at Bidii Junior School were learning about peace and conflict resolution.

a) What is peace? (1 mark)

b) What is a conflict? (1 mark)

c) What is conflict resolution? (2 marks)

d) State **three** characteristics of a person having inner peace? (3 marks)

e) Highlight any **three** conflicts that arise in your school? (3 marks)

f) How would you deal with a conflict between you and your deskmate? (2 marks)

26. You learnt that human rights ensure that everyone has access to freedom and protection necessary for a dignified life.

a) State **two** characteristics of human rights. (2 marks)

b) Give **three** examples of human rights. (3 marks)

c) Children's rights are violated in our society today. Outline any three ways in which these rights are violated. (3 marks)

d) Prof. Wangari Maathai was a pioneer in articulating the links between human rights, poverty, environmental protection and security. List any **two** desirable personality traits portrayed of Prof Wangari Maathai. (2 marks)

(10 marks)

This image shows a single sheet of white paper with horizontal blue or grey ruling lines. The lines are evenly spaced and run across the width of the page. There are approximately 20 lines visible. The paper has a slight shadow on its right side, suggesting it's resting on a surface.

(10 marks)

This image shows a single sheet of white paper with horizontal blue ruling lines. The lines are evenly spaced and run across the width of the page. There are no margins, text, or other markings on the paper.

Page 8 of 8